

Martin Luther Church Building Project

Annual General Meeting 2023



Martin Luther
Daycare



Martin Luther
Evangelical
Lutheran
Church

Agenda

1. Progress since 2022 Town Hall
2. Updated Timeline
3. Foyer Design Input



Martin Luther
Daycare



Martin Luther
Evangelical
Lutheran
Church

1. Progress since AGM



Martin Luther
Daycare



Martin Luther
Evangelical
Lutheran
Church

Progress since AGM

- Geotechnical investigation completed
- Hazardous materials investigation completed
- Daycare program drawings completed and submitted to the ministry
- New foyer scope design underway Permit drawings underway



Martin Luther
Daycare



Martin Luther
Evangelical
Lutheran
Church

2. Updated Timeline



Martin Luther
Daycare



Martin Luther
Evangelical
Lutheran
Church

Architect's timeline

- **Coordination Continuation** – COMPLETION BY END OF FEBRUARY
 - AGM Presentation
 - Congregation input on foyer
 - Committee to finalize scope of work in foyer and office vestibule
- **Ministry Approval** – SUBMITTED

After Ministry Approval

- **Permit Submission** – APPLICATION AIMED FOR END OF MARCH
- Tender – AIMED FOR MID-APRIL
- Construction phasing plan – END OF APRIL/MAY
- Construction start – BEGINNING OF JUNE



Martin Luther
Daycare



Martin Luther
Evangelical
Lutheran
Church

4. Foyer Design Input

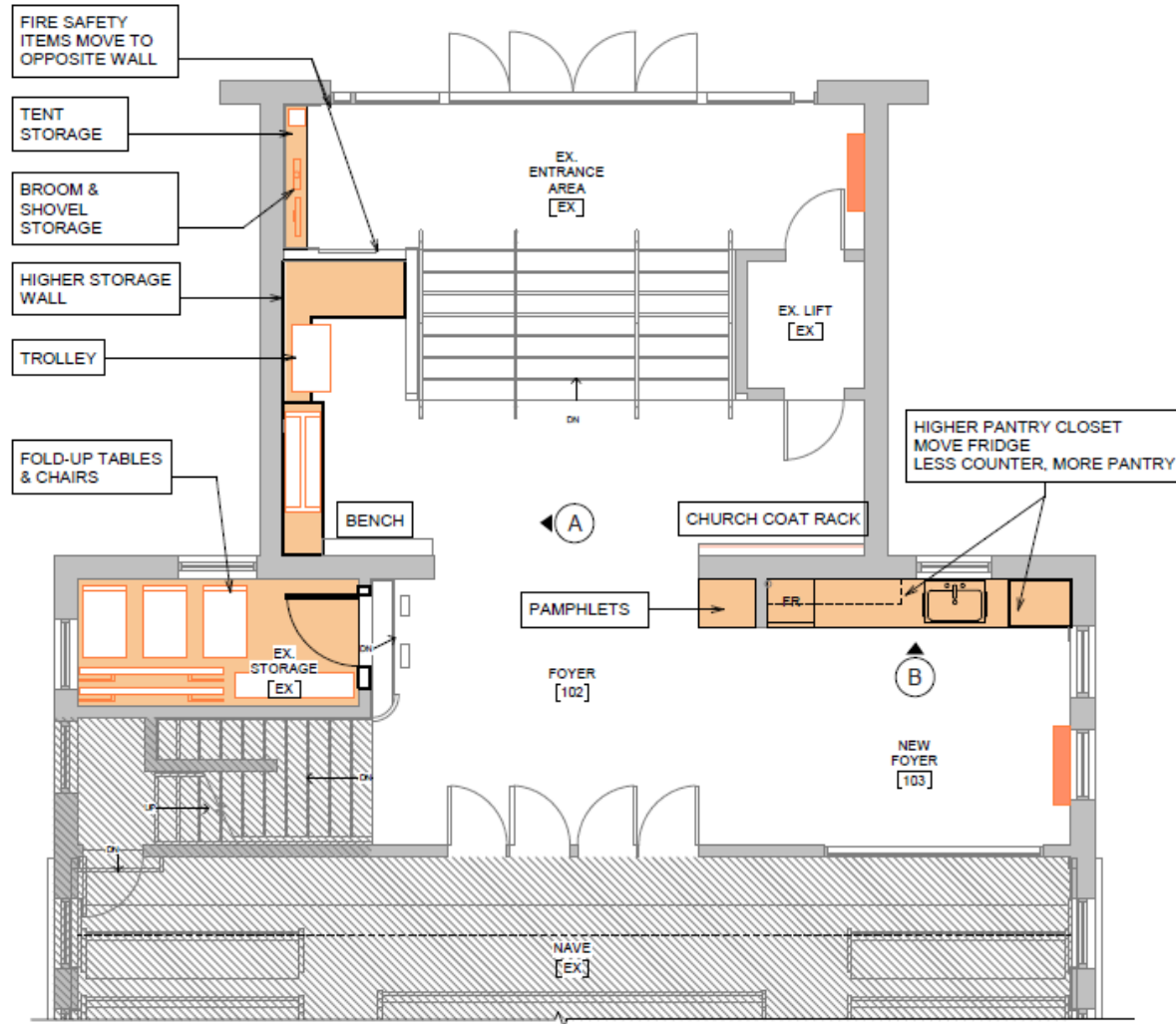


Martin Luther
Daycare

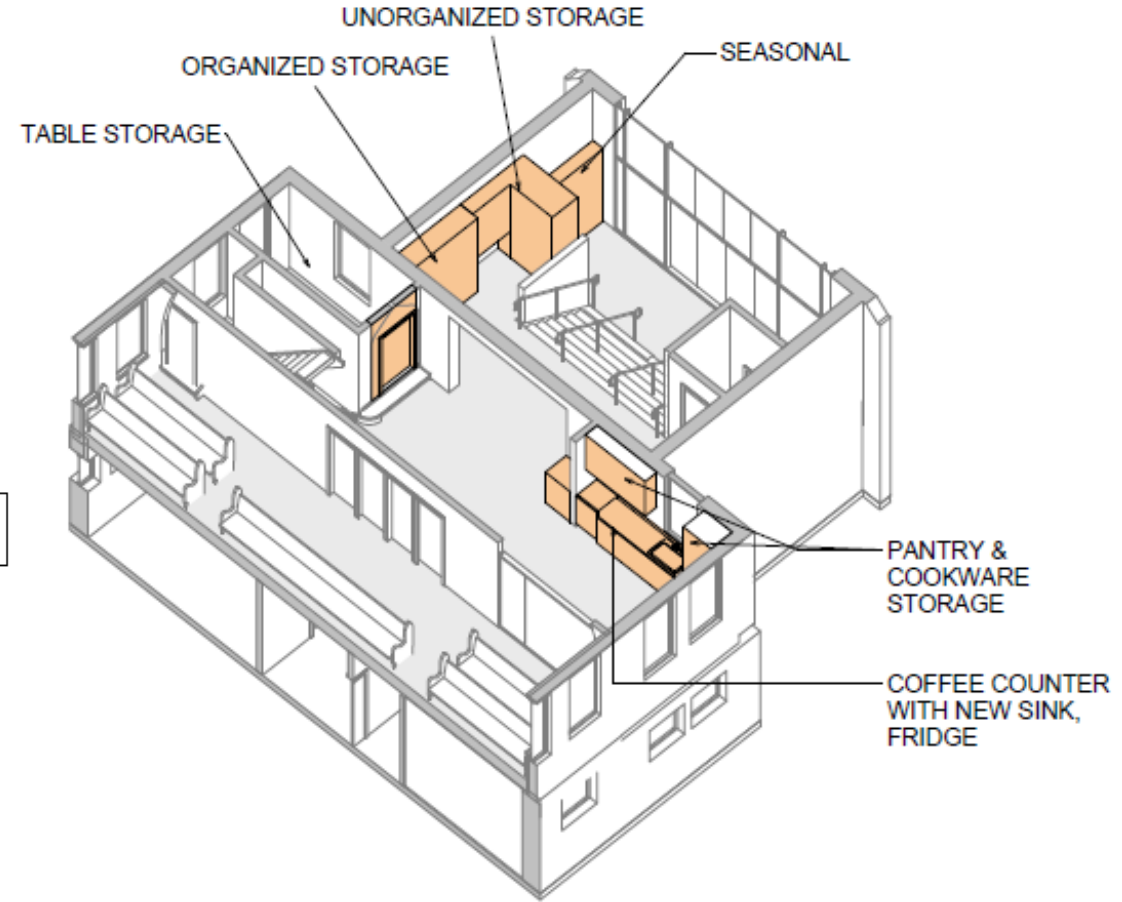


Martin Luther
Evangelical
Lutheran
Church

Updated Foyer



GROUND FLOOR FOYER PLAN



ISOMETRIC VIEW OF FOYER

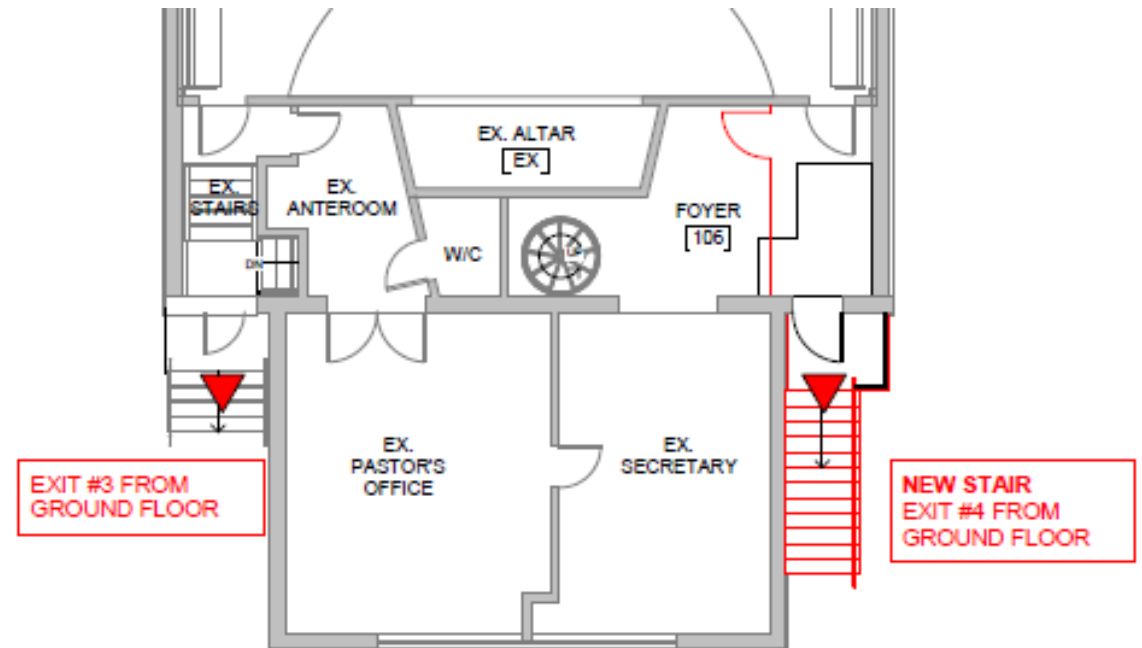


Martin Luther
Daycare

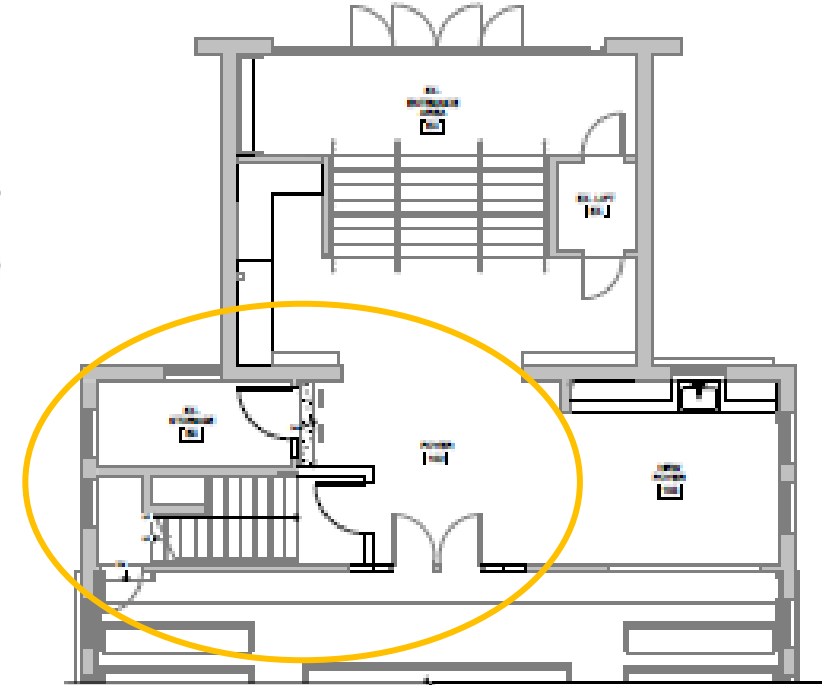
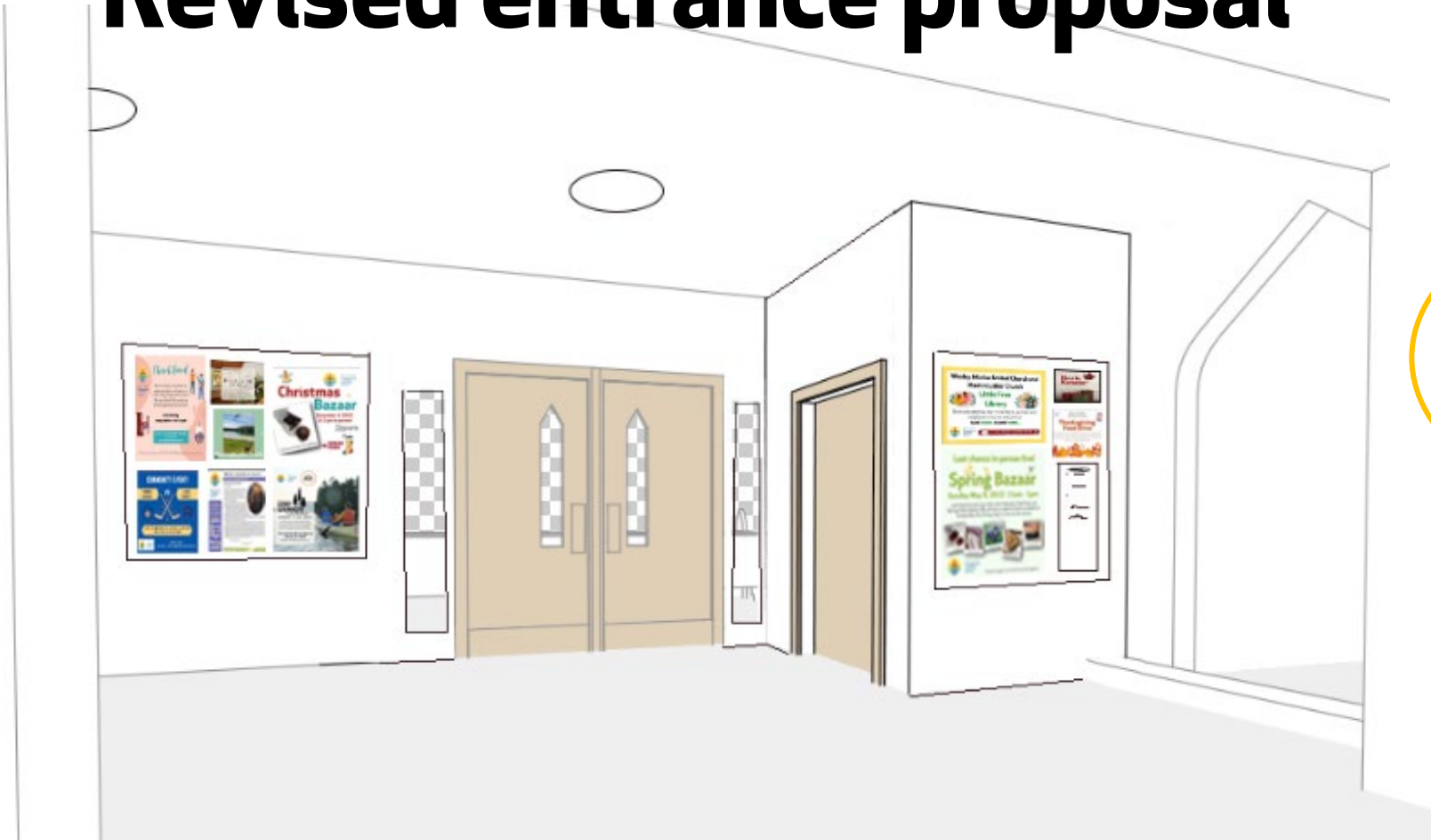


Martin Luther
Evangelical
Lutheran
Church

The following proposal to make the side exit into a fire exit would save between \$50-60,000 on the back exterior exit stair



Revised entrance proposal



CONS

- Less doors
- Change to symmetry

PROS

- Save 50,000
- Get rid of door mid-stair
- More display space



Martin Luther
Daycare



Martin Luther
Evangelical
Lutheran
Church

Important aspects of the foyer

General

- Clean and tidy
- Aesthetically pleasing
- Permanent seating
- Coat storage
- Plaque display
- Information display

Groups and circles

- Tables and chairs
- Materials storage for activities
- Available washroom
- Kitchenette and materials for food, snacks, coffee and tea
- Information display

Mission (bowls and blessings)

- Kitchenette for food storage and easier soup service
- Storage for food and clothing donation items
- Table, chair, and tent storage
- Information display to outside

Worship and events

- Kitchenette for coffee hour
- Flexible seating
- Extension to the outside
- Available washroom
- Table and chair for sign in/distribution/sales etc.

Partners and renters

- Tables and chairs
- Available washroom
- Available kitchenette

Infrastructure

- Preserve existing elements (ex. Fire alarm)
- Proper heating and cooling
- Sign, shovel, gardening storage



Martin Luther
Daycare

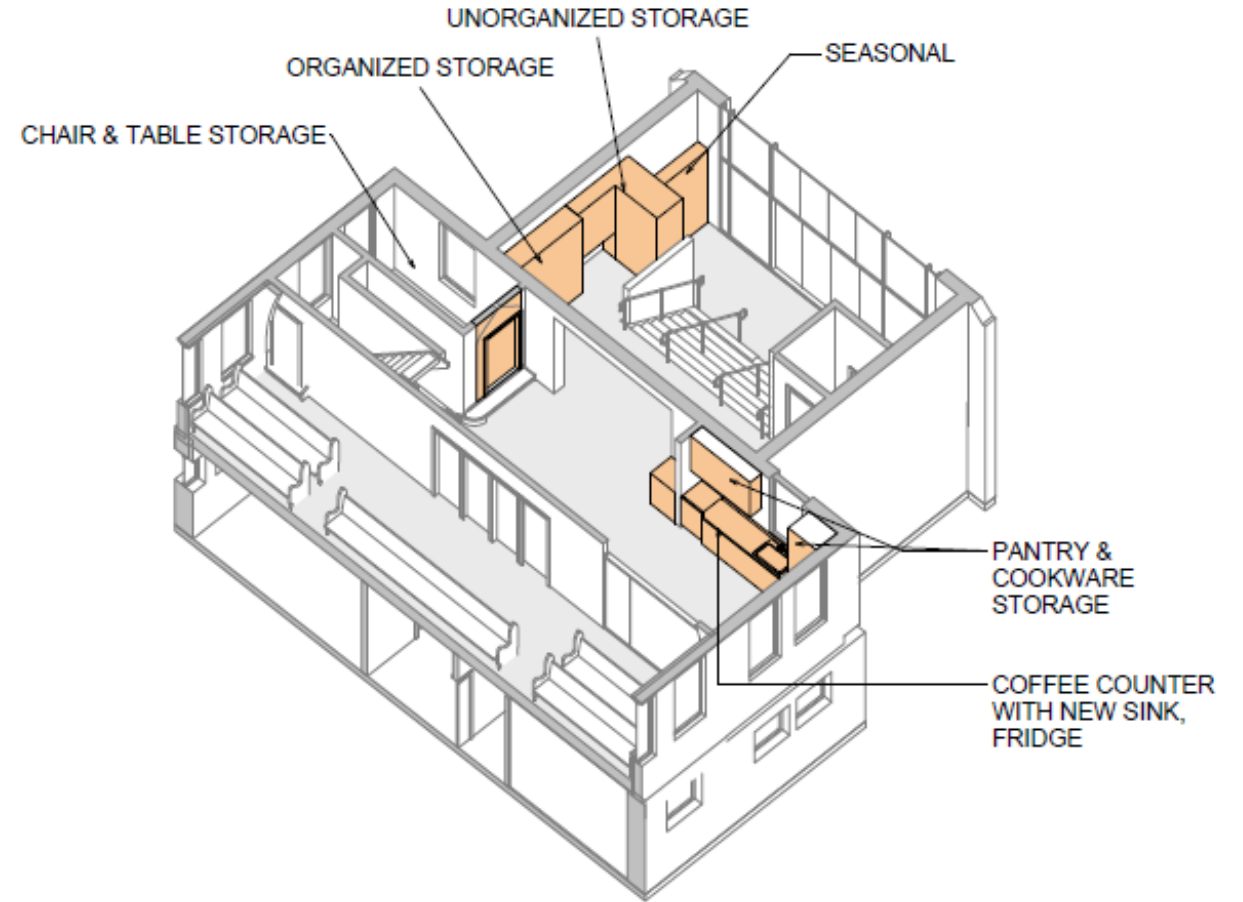


Martin Luther
Evangelical
Lutheran
Church

Discussion

***The committee will also consider existing conditions, budget and balancing needs

- What is most important to you in this space?
- What do we need to store in this space?
- What do we need to display in this place?
- What needs to be a permanent element?
- What needs to be a flexible element?
- What appliances should go in the kitchenette?



ISOMETRIC VIEW OF FOYER



Martin Luther
Daycare



Martin Luther
Evangelical
Lutheran
Church